

# CORR/GUARD<sup>®</sup>

SPECIAL GAS VENT

**METAL-FAB** INC.  




**UL** US  
LISTED



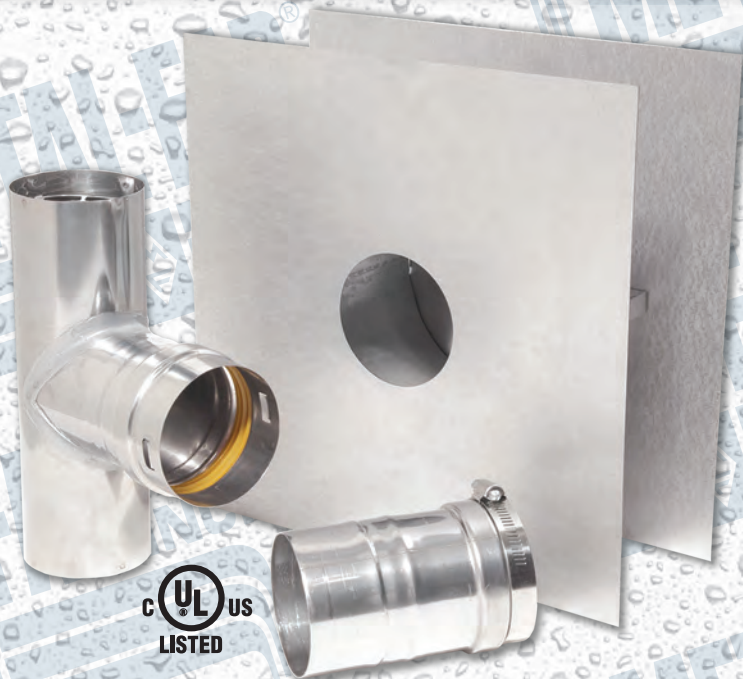
## UNIT & TUBE HEATER VENTING



# CORR/GUARD®

SPECIAL GAS VENT

NEW



## FEATURES

### Listings

- ▶ CORR/GUARD® is tested and listed to UL 1738 and ULC-S636

### Performance

- ▶ Precision engineered for venting unit and tube heater gas-fired condensing appliances, categories II, III, and IV
- ▶ Positive pressure rated chimney system
- ▶ High resistance to caustic condensate
- ▶ Superferritic stainless steel flue
- ▶ Limited Lifetime Warranty

## Horizontal Unit/Radiant Heater Vent Kit (Part #3CGVSWLK-B & 4CGVSWLK-B)

CORR/GUARD® products are faster to install, engineered with a SNAP-LOCK connection that provides a safe, precise, and reliable pressure-rated assembly every time. Specified by appliance manufacturers and designed specifically for gas-fired unit and tube heater appliances. Metal-Fab has a complete line of residential and commercial CORR/GUARD® products to meet any unit or tube heater application.

## BENEFITS

- ▶ Exclusive SNAP-LOCK design creates proper joint alignment every time.
- ▶ Light-weight product design reduces installation time and cost.
- ▶ CORR/GUARD® Value series available for category III appliance applications.
- ▶ Available in 3", 4" and 5" diameters



100% ORDER FILL • ONE-STOP VENT SHOPPING • 1-2 DAY SHIPPING

METAL-FAB, INC.

P.O. BOX 1138  
WICHITA, KANSAS 67201



FASTER. SAFER. BETTER.

800-835-2830

WWW.METAL-FABINC.COM  
INFO@METAL-FABINC.COM